



GEORGETOWN

A KENTUCKY TREASURE

Georgetown/Scott County Tourism Commission
P.O. Box 825
399 Outlet Center Drive
Georgetown, KY 40324

The Tourist Information Center is open
Monday through Friday
9:00 a.m. to 5:00 p.m.

(888) 863-8600 (toll-free)
(502) 863-2547

www.georgetownky.com

Kentucky
UNBRIDLED SPIRIT

Printed in cooperation with the
Kentucky Department of Tourism.



GATEWAY TO THE KENTUCKY HORSE PARK



GEORGETOWN

A KENTUCKY TREASURE



Look a little closer...All around...Treasures abound.



GEORGETOWN
A KENTUCKY TREASURE

www.georgetownky.com

If you could take all of the magic and mystique that make the Bluegrass memorable, and distill it into one beautiful, easily accessible location, you would wind up with something very much like Georgetown and Scott County.

- Wander a historic downtown area right off a picture postcard.
- See why the sprawling Kentucky Horse Park is the perfect host for The Alltech Fédération Equestre Internationale World Equestrian Games in 2010 – one of the most prestigious equine events on earth.
- Feel the earth shudder at Toyota Motor Manufacturing, Kentucky, Inc., during one of the top ten industrial tours in North America.
- Ride a horse, paddle a canoe, bike or drive some of America's most scenic back roads.
- Browse dozens of antique shops, bargain your way through vast flea markets, or pick up values at the Factory Stores of America Outlet Center.
- Marvel at graceful kites at an International Kite & Culture Festival, or thrill to a thunderous Civil War re-enactment. Enjoy the small-town charm of the Festival of the Horse, and countless other seasonal festivals.



Gateway to the Kentucky Horse Park...

Perhaps the one image that describes the Georgetown area most vividly is a glossy thoroughbred grazing a lush bluegrass paddock. But thoroughbreds are just one of the many equine breeds that live, work, and compete in and around Georgetown. You will have plenty of opportunities to scratch an equine ear, take in an event, or climb into a saddle.

• **Kentucky Horse Park**, Ironworks Parkway, just south of Georgetown via I-75 or US 25, 1,224-acre theme park, museum, Parade of Breeds, working farm tour, retired champions, trail rides, special events and shows. 800-678-8813, 859-233-4303 or www.kyhorsepark.com

In 2010, **The Alltech Fédération Equestre Internationale Games (FEI Games)** are coming to the Kentucky Horse Park. This is the first time ever that the "Olympics for Horses" will be held outside Europe. The two-week international event takes place in the fall of 2010, but preparations are already underway with facility development, lead-in events, and new attractions. Ticket sales are expected to top 500,000, more than 1,000 athletes representing 50 countries are expected

**FEI GAMES™**
Kentucky 2010

Alltech®



to participate, live broadcasts will reach 40 countries, and 1,000 international media representatives will cover the event. www.feigames2010.org

• **Festival of the Horse**, Downtown Georgetown, annual 3-day celebration of the role of the horse in the history of Scott County, exhibits, concessions, arts & crafts, carnival, 5k run and live entertainment. 502-863-5424 or www.festivalofthehorse.info



• **Horseback riding** at Whispering Woods Riding Stables, trail and pony rides, by reservation. 502-570-9663 or www.whisperingwoodstrails.com

• **Carriage-driving lessons** at Gayla Driving Center. This 560 acre farm includes a 100' by 200' indoor arena with viewing area, perfect for year-round lessons and training. It is the home of the Gayla Bluegrass Combined Driving Event and is the National Headquarters for the United States Driving for the Disabled. 502-863-5113 or 800-360-5774, www.gayladrivingcenter.com

• **Riding lessons** at Mallard Farm, 502-863-0107; Burr Oak Farm, 502-863-0887; High Point Equestrian Center, 502-863-2944

• **Old Friends Farm for Retired Thoroughbreds**, Dream Chase Farm, Georgetown, a 52-acre retirement and rescue facility for well-known Thoroughbreds such as Hall of Famer Precisionist, 1984 Bluegrass Stakes winner Taylor's Special, 1988 Eclipse-winning Turf Champion, Sunshine Forever & one of the last great sons of Damascus, Ogygian. For tour information, 502-863-1775 or www.oldfriendsequine.org

www.georgetownky.com

Antiques, Boutiques and Good Eats... Downtown Georgetown

Historic Downtown Georgetown is one of the most picturesque Victorian downtown areas in Kentucky. It is home to an impressive array of antique shops, unique boutiques, and restaurants & coffee shops that serve everything from country cooking to continental cuisine.

• **Historic Downtown Walking Tour**, Scott County Courthouse (1877), City Hall (1899), historic Scott County Jail (1892), many more on National Register of Historic Places. Walking tour brochure at the Georgetown/Scott County Tourist Information Center.

• **Antiques**, Downtown Georgetown's selection of antique shops has long been a major attraction for visitors from near and far. Aficionados can find everything from American & European furnishings to Kentucky traditional items, elegant heirlooms and the purely whimsical. The Hidden Treasures Antique Show in May highlights Georgetown's antiques heritage in a bright, festive event. It's the biggest antiques-oriented event of the year for a city famous for antiques! Scores of dealers augment the already impressive array of local outlets.

• **Downtown Shopping**, in the midst of picturesque historical architecture, find stylish apparel for ladies and gents, antique to modern furniture and household items, gifts, notions, art and artifacts, and children's items. Look for colorful mementos with the *Georgetown A Kentucky Treasure* logo for a lasting reminder of your visit to Georgetown.

• **Georgetown College**, downtown, founded 1829, oldest Baptist college west of the Allegheny Mountains, numerous antebellum buildings and home of the Cincinnati Bengals Training Camp. 502-863-8174

• **Anne Wright Wilson Fine Arts Gallery**, Georgetown College, fine arts exhibits. 502-863-8000

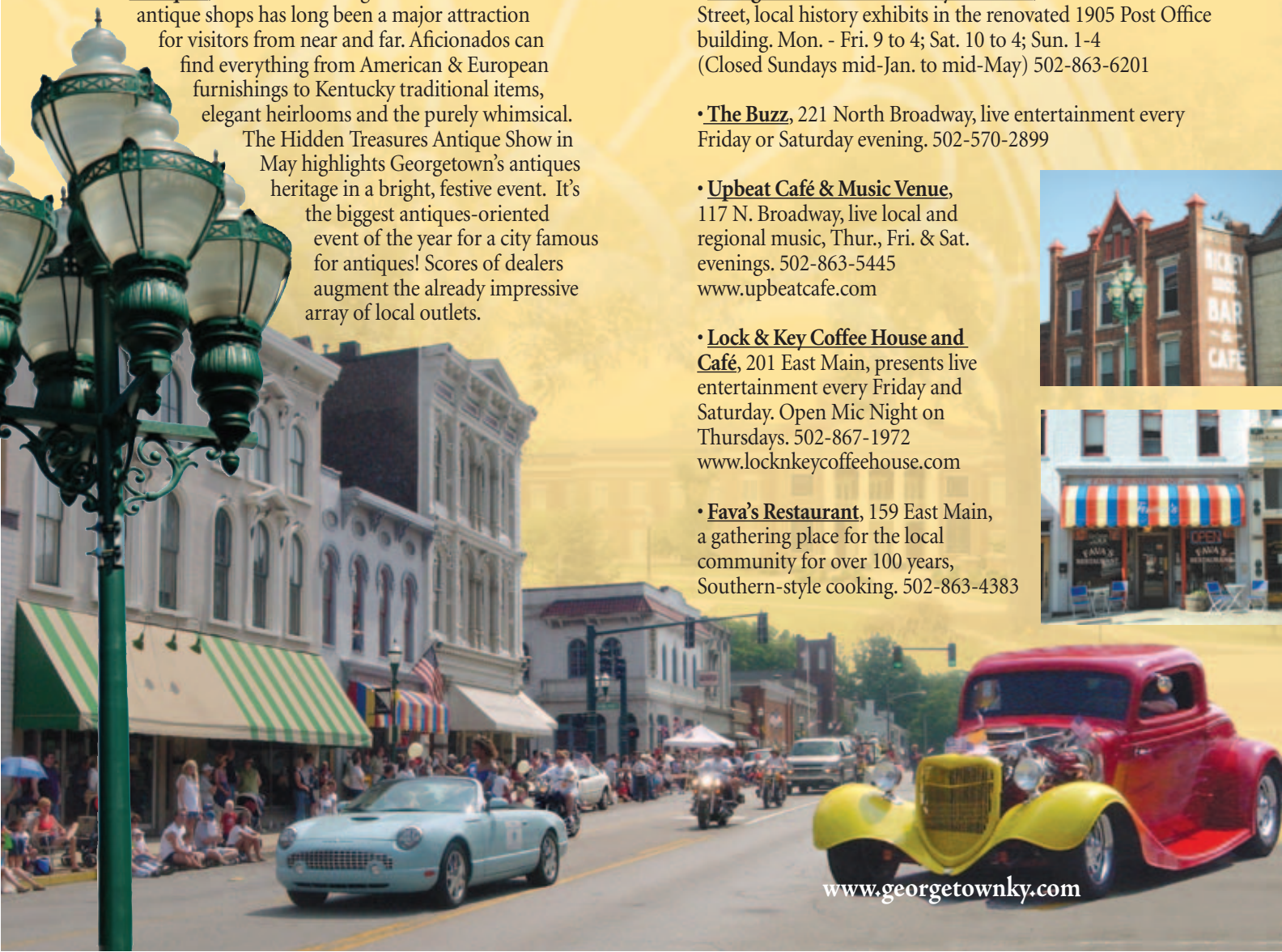
• **Georgetown & Scott County Museum**, 229 East Main Street, local history exhibits in the renovated 1905 Post Office building. Mon. - Fri. 9 to 4; Sat. 10 to 4; Sun. 1-4 (Closed Sundays mid-Jan. to mid-May) 502-863-6201

• **The Buzz**, 221 North Broadway, live entertainment every Friday or Saturday evening. 502-570-2899

• **Upbeat Café & Music Venue**, 117 N. Broadway, live local and regional music, Thur., Fri. & Sat. evenings. 502-863-5445
www.upbeatcafe.com

• **Lock & Key Coffee House and Café**, 201 East Main, presents live entertainment every Friday and Saturday. Open Mic Night on Thursdays. 502-867-1972
www.locknkeycoffeehouse.com

• **Fava's Restaurant**, 159 East Main, a gathering place for the local community for over 100 years, Southern-style cooking. 502-863-4383



Treasures...

Georgetown is the perfect location to discover genuine Kentucky treasures.

Explore relics of Georgetown's spirited past at Ward Hall. Uncover the religious origins of the Cardome Centre and St. Francis de Sales Mission. Everywhere you look, you'll find Southern architecture, antiques and museum artifacts. Each location weaves a tale of history, mystery or cultural uniqueness.

Then, get a glimpse of what's new at the visitor center at Toyota Motor Manufacturing, Kentucky, Inc. Or, discover nature's secrets from Georgetown's many agritourism venues, seasonal festivals and events.

Treasures for the entire family; treasures you will find nowhere else.

• **Cardome Centre**, US 25, north of downtown, former monastery of the Sisters of Visitation, now a community and event center, permanent exhibit on Georgetown's Sister City, Tahara, Japan. Mon. - Fri., 8- 4. 502-863-1575
www.cardomecenter.com



• **Georgetown Cemetery**, US 25, south of downtown, fascinating Victorian monuments, graves of equine artist Edward Troye and several Kentucky governors.

• **St. Francis de Sales Mission**, US 460, about 7 miles west of downtown, built in 1820 for Kentucky's second Catholic congregation.

• **Ward Hall**, National Landmark, built circa 1853, believed to be the largest Greek Revival house in Kentucky, certainly one of the finest examples in the South. Tour guides describe the elaborate parties of the late 1800's, famed Southern belle Sally Ward, and much more. Today, the Hall hosts beautiful weddings on its manicured lawn. Tours by appointment, 888-863-8600, www.wardhall.org

• **Ward Hall Gothic Racing Barn**, elaborate white frame board-and-batten two-story structure often mistaken by tourists for a residence. Plans are to restore the structure to its original state.

• **Georgetown College**, founded in 1829, oldest Baptist college west of the Allegheny Mountains, numerous antebellum buildings. 502-863-8174

• **Toyota Motor Manufacturing, Kentucky, Inc.** 1001 Cherry Blossom Way, modern auto manufacturing facility produces Camry, Avalon, Toyota Hybrid and Solara vehicles annually at a total of nearly 500,000, visitor center with exhibits, motorized tram tours by reservation. Children accompanied by parents must be in first grade or older; school group tours available for fourth graders and up. Open Monday-Friday, 502-868-3027 or 800-866-4485



www.georgetownky.com



Outdoor Treasures...

Our back roads wind through beautiful horse farms, Irish fieldstone fences, tobacco fields and cattle farms, and along Elkhorn Creek, an ideal spot for a canoe or a cane pole. The North Fork of Elkhorn Creek is considered one of America's top spots for smallmouth bass. A network of trails is being developed along the creek and its tributaries for walkers to explore its scenic and historic beauty.

• **Royal Springs Park**, Downtown Georgetown. This is where it all began: Georgetown was founded here in 1786; the colorful Reverend Elijah Craig (a man with his own ideas about spirits and spirituality) is credited by many authorities with distilling the first Bourbon whiskey here. Also the site of the first paper mill in the West (1793); a log cabin built in 1874 by former slave Milton Leach still stands, and houses a mini-museum of local history.

• **Elkhorn Creek**, one of Kentucky's loveliest and longest creeks, ideal for canoeing, kayaking, and fishing. Access points and picnic facilities: Oser Landing, US 460 E; Great Crossing Park, off US 227 N; Cardome Park, US 25 N; rent canoes from Canoe Kentucky, 800-K-CANOE-1

• **Bill's Live Catfish Farm**, fishing at 1588 Carrick Pike, 502-863-4269, and Parrish Lakes, 1283 Glass Pike, 502-535-6939

• **Elkhorn Corridor Trail System**, several segments open, more in progress; Western Trail is an easy 1.5 mile trail, Cardome Trail (Cardome Centre, US 25 N) offers 2 easy miles and links to the 3/4-mile Peninsula Trail. Portions of each trail are handicapped-accessible.

• **Scenic Bicycling and Country Drives**, visit Sadieville, with its restored railroad depot, and Stamping Ground, named for the buffalo herds that waited impatiently to drink at its spring. Suggested routes available from the tourist information center.

• **Golf Courses**, Coal Ridge, 18 holes, par 69, 502-863-0754; Canewood, 18 holes, par 71, 502-868-0245; Cherry Blossom Village, 18 holes, par 72, 502-570-9849; Longview, 18 holes, par 72, 502-863-2165

• **The Community Sport and Activity Pavilion of Georgetown - Scott County**, 140 Pavilion Dr., lap and competitive pools, indoor walking track, volleyball and basketball courts, fitness equipment and a Skate Park. 502-863-7865, www.thepavilionky.com



• **Scott County Native Plants Arboretum**, Georgetown College campus, compact "plant tour" of Kentucky, with many native species. 502-863-0984

• **Equus Run Vineyards**, nestled amidst picturesque stone fences and rolling fields of Bluegrass, in the quaint town of Midway, Kentucky, is a surprising place to find a world-class winery. Tasting room, gift shop and tours. Open year-round. 859-846-9463, www.equusrunvineyards.com

• **Cincinnati Bengals Training Camp**, Georgetown College Athletic Complex, July to mid-August, watch NFL team practice, intrasquad scrimmage, and mock games. 502-868-6300/502-868-6341, www.bengalscamp.com



www.georgetownky.com

The Market Place...

The Georgetown marketplace is where treasures abound. Whether you are looking for a bargain, a one-of-a-kind art piece, a hard-to-find item, or that perfect gift for someone special, Georgetown offers a shopping adventure which can best be defined as an exploration. The fun is in the search for an item or a value you may find nowhere else.



• **Farm Tours, Orchards & Markets - Amerson Farm Orchard, US 460** Bypass, vegetables and fruits; Bi-Water Farms, US 25 N, flowers and vegetables; Double Stink Hog Farm, pumpkin patch and vegetables; Evans Orchard & Cider Mill, 180 Stone Road, apples, pumpkins and vegetables. All open seasonally.

• **Scott County Farmers Market, Court Street/Downtown Georgetown, open in season Fridays, 7 a.m. -2 p.m.;** second location at Whitaker Bank on Champion Way with Thursday hours, 4 p.m. -7 p.m. 502-863-0984

• **Quest Farm, 627 Glass Pike, produce, crafts, mums, etc.,** Spring Fling in April, Harvest Days in September. Free admission, contributions are welcomed to help support our program: a home & work place for mentally challenged adults. 502-535-6064, www.questfarm.org

• **Country World, US 460 at I-75, live entertainment every Saturday night, country, contemporary & gospel;** also, special events like tractor pulls, car shows, etc. 502-867-0831 or www.countryworldfleamarket.com

• **Factory Stores of America Outlet Center, I-75 Exit 126,** shop and save on major brand products, open daily. 502-868-0682

Flea Markets

Country World, US 460 at I-75, largest indoor-outdoor flea market in Kentucky, open weekends. 502-867-0831

Vendor Mall,
150 Edwards Ave.
502-868-0858

Peddler's Mall,
502-868-6888



Tahara, Japan, Sister City Influences...

When Toyota Motor Manufacturing, Kentucky, Inc., arrived in Georgetown in the late 1980's, local leaders thought a sister city partnership might offer a more intimate glimpse of Japanese culture and an opportunity for greater mutual understanding.

Since 1990, Georgetown and Tahara, Japan, have been sister cities, and frequent exchanges have created many lasting friendships. Located on the Pacific Ocean in Aichi Prefecture, Tahara City has a rich history of 500 years as a castle town, and is famous for its connection with the artist and pioneer Kazan Watanabe, who lived in the later years of the Tokugawa era.

Tahara is favorably situated in beautiful natural surroundings and has flourished as the center of cultural and economic activities of the Atsumi Peninsula. Tahara has one of the largest seaside industrial zones in Japan as well as a thriving agricultural and stockbreeding industry. Its positive response to ecological issues and energy preservation in recent years shows that the people of Tahara City keep their eyes on the future as worthy successors to Kazan Watanabe.

• **Yuko-En on the Elkhorn, north fork of Elkhorn Creek adjacent to Cardome Centre, official Kentucky-Japan Friendship Garden, features primarily native plants blended with Japanese garden principles.** 502-316-4554, www.yuko-en.com



Georgetown International Kite & Culture Festival, each year in April at the Cardome Centre, US 25, draws thousands annually, features Kentucky and Georgetown heritage, International Food Court, live entertainment from International and Kentucky musicians. Free admission, small parking fee. 502-863-1575, www.kitefest.com or www.cardomecenter.com

For more information on sister city influences visit the Georgetown/Scott County Tourist Information Center or our website www.georgetownky.com



Convenience...

Georgetown and Scott County are ideally located just north of the crossroads of I-75 and I-64, 12 miles north of Lexington, in the heart of Horse Country. When you explore Scott County – whether for a few hours or a few days – you will discover exactly what makes us a Kentucky Treasure.

Georgetown is within a day's drive to 2/3 of America's population.



Georgetown-Scott County Regional Airport
(Marshall Field), US 460 east of Georgetown, 5,500-foot runway, convenient to the entire area. 520-863-6320, email gtownairport@speedbeam.com

www.georgetownky.com

Points of Interest...

(See the map on the next page)

- 1 Georgetown and Scott County Tourism Information Center/
Factory Stores of America Outlet Center
- 2 Downtown Georgetown
- 3 Scott County Courthouse
- 4 Georgetown and Scott County Museum
- 5 Royal Springs Park
- 6 Georgetown College
- 7 Cincinnati Bengals Training Camp
- 8 Georgetown Cemetery
- 9 Kentucky Horse Park
- 10 Yuko-En – The Official Kentucky-Japan Friendship Garden
- 11 Elkhorn Creek Nature Trail
- 12 The Pavilion Swimming Pool and Fitness Center
- 13 Toyota Motor Manufacturing and the Toyota Visitors Center
- 14 Ward Hall
- 15 Country World
- 16 Cardome Centre

Restaurants...

(Restaurants are smoke-free within the city limits of Georgetown, KY)

- | | |
|--------------------------------|--------------------------------------|
| Applebee's | McDonald's |
| Arby's | Mexico Lindo |
| Asian Royal Buffet | Mi Casita |
| Brooklyn Pizza | Mi Mexico |
| Bruster's Ice Cream | Mulberry Café |
| Burger King | O'Charley's |
| Camino Grande | Old Time Grill |
| Cherry Blossom Country Club | Orient Express |
| China Buffet | Papa John's Pizza |
| Cici's Pizza | Pizza Hut |
| Cracker Barrel | PJ'S Cottage |
| Dairy Freeze | Popeyes Chicken |
| Dairy Queen | Quiznos Sub |
| Domino's Pizza | Ruby Tuesday |
| Emperor China Buffet | Sam's Restaurant |
| Fatkats Pizza | Scoops & More |
| Fava's Restaurant | Snappy Tomato Pizza |
| Fazoli's | Sonic Drive-In |
| Frisch's Big Boy | Steak & Shake |
| Gold Star Chili | Subway |
| Golden Corral | Taco Bell |
| Jack's BBQ | The Plum Tree Oriental
Restaurant |
| K Café | Trumps Bar & Grill |
| Kentucky Fried Chicken | The Buzz/Music |
| Krystal's | Upbeat Café & Music Venue |
| Lock & Key Coffee House & Café | Waffle House |
| Long John Silver's | Wendy's |
| Mancino's Pizza & Grinders | |

GEORGETOWN

A KENTUCKY TREASURE

-  LODGING
-  BED & BREAKFASTS
-  POINTS OF INTEREST
-  CAMPGROUNDS



2 DOWNTOWN
Antiques, Boutiques and Good Eats...
 ANTIQUE AND SPECIALTY SHOPS

WATER	BROADWAY	3	4	EAST MAIN STREET
				GEORGETOWN COLLEGE
5	BROADWAY	HAMILTON	MULBERRY	MILITARY
				6

COLLEGE STREET

Miles to...
 ...Frankfort (17 miles)
 ...Lexington (10 miles)
 ...Paris (20 miles)
 ...Cynthiana (16 miles)
 ...Stamping Ground (9 miles)

